



**Sussex Community**  
NHS Foundation Trust

**EPMA**

# **Intermediate Care Units**

**Daniel Clarke** - Specialist Computer and Procurement Pharmacy Technician

**Laura Pullan** - Digital Nurse Specialist

**Rebecca Gosrani** - Senior Clinical Pharmacist - Digital

# SCFT EPMA Journey



Electronic Prescribing Medicines Administration



Collaborative effort between Digital and Medicines Management Teams



Started in 2019 with a business case to implement EPMA across all adult in-patient wards



First ward went live May 2022



Last ward went live March 2023

# Before EPMA...



Illegible handwriting



Prescribing of allergens



Missing charts



Missed doses

Valuable clinical time was spent locating charts

Charts could only be accessed by one person at a time

Time spent travelling to physically review charts

Clinical time was wasted on a paper heavy process to order medications



# A key element of the implementation was to integrate SystemOne with the dispensary system

The screenshot shows a news article on the TPP website. The header includes navigation links: News, Features, CCIO Network, CNIO Network, Health CIO, Intelligence, Events, Networks, Podcasts, AI and Analytics, Clinical Software, Cyber Security, Digital Patient, Infrastructure, Interoperability, and Share. The article title is "Sussex Community NHS Trust pilots new EPMA interoperability standard" under the "INTEROPERABILITY" category. The author is Cora Lydon, dated 19 May 2022. The article content includes links to CareFlow Medicines Management system, CareFlow Pharmacy, Central and North West London NHS Foundation Trust, CMM, electronic prescribing and medicine administration, ePMA, NHS Digital, NHS England, Sussex Community NHS Trust, SystemOne, and TPP. The image shows a white pill bottle with various pills floating above it.

The screenshot shows a press release on the TPP website. The header includes the TPP logo and navigation links: HOME, ABOUT US, and PRODUCTS. The main image shows a pharmacist in a white coat in a pharmacy, with the TPP logo and "CareFlow MEDICINES MANAGEMENT" overlaid. The text below the image reads: "TPP are delighted to announce the rollout of messaging between SystemOne's EPMA solution and the CareFlow Medicines Management (CMM) system (formerly WellSky, JAC). This development allows clinicians to electronically order medication on SystemOne which will be instantly available in CareFlow Pharmacy."



# All 14 ICUs are now live with SystemOne EPMA

EPMA Project Team on site supporting Viking  
Ward Intermediate Care Unit



EPMA Go-Live #6

It's EPMA  
Go-Live  
#6



Well done  
Viking Ward  
Intermediate  
Care Unit



The EPMA Project Team would  
like to say well done and thank  
you to Ferring Ward  
at Salvington Lodge  
for another successful Go-Live

Go-Live #10



The EPMA Project Team would like  
to say well done and thank you to...

Viking Ward

Caravelle Ward

Piper Ward

Go-Lives #6 #7 and #8



Another SCFT  
EPMA Go-Live  
Well done  
Leslie Smith  
ward



Go-Live #12



Another SCFT  
EPMA Go-Live

Well done  
Don Baines Ward

Go-Live #11



# In the last year the EPMA Project team has trained

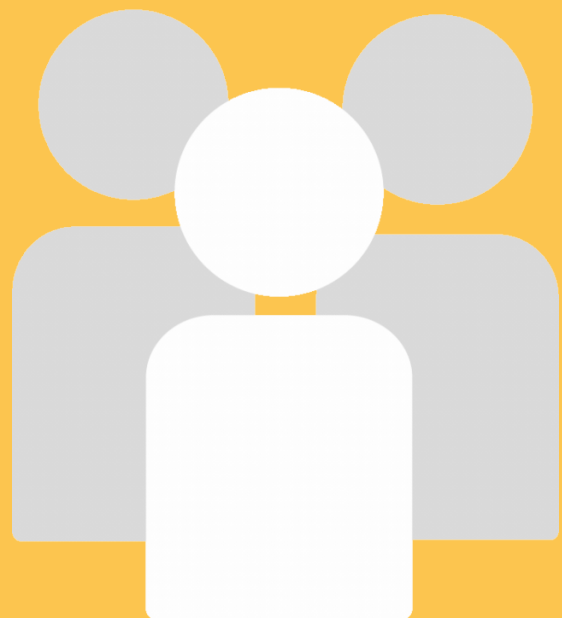
49 prescribers

31 members  
from  
Medicines  
management

7 Managers  
service Leads

11 matrons /  
sisters

228 nurses



# Thats 326 members of staff

# As a team we have:



Provided 26 weeks  
worth of on-site  
support

From 08:00 till  
23:00 including  
weekends

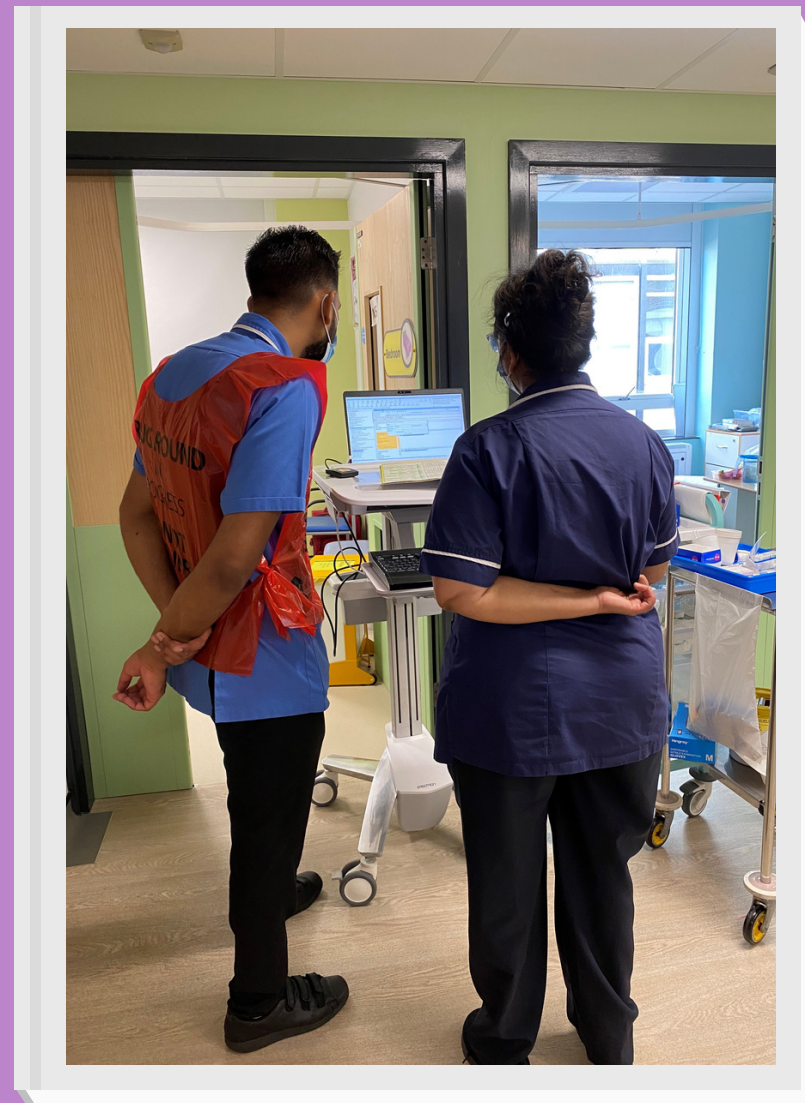
Produced 24  
Practice Notes  
Guides

Created ten EPMA  
newsletters

Produced 40  
Quick Reference  
Guides

Sent a feedback  
surveys to nursing  
staff

# A few highlights from the nurses feedback





Be confident & have faith that it will be easier to utilise as a system & it is safer for patients & time efficient too

Safe system. Less Medication errors

Feel the fear and do it anyway

You will find it easy to learn. You will find it safer.

It is quicker, more comprehensive and as nurses we are not spending time 'chasing' medication charts (as we used to)

Not to worry as you are already familiar with S1 it means it is a lot easier to navigate and get the hang of it really quickly.

I would like to let them know that the EPMA is really worth because it saves stress, time and prevents medication errors

It is worth it

Just relax. its not bad

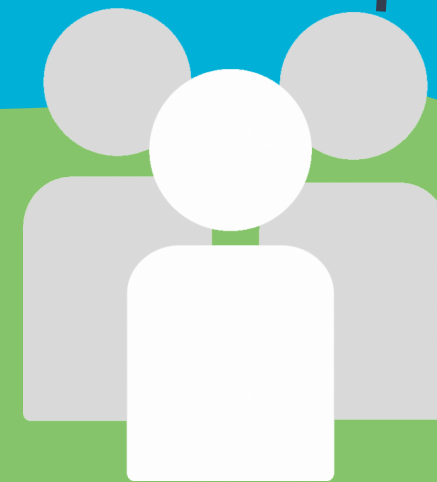
Its absolutely helpful, easy to manage and exciting



# Doctors and pharmacy colleagues comments...

I no longer have a two hour journey to check paper charts. I can provide my clinical service to wards more efficiently. Picking up problems sooner means better outcomes for our patients

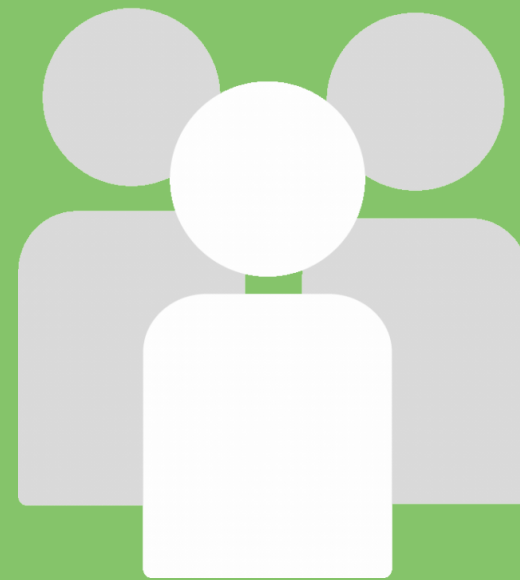
I love it. Thank you for supporting us during the roll out. I was apprehensive for many months but I am seeing the benefits. Let my colleagues who are still adjusting know it gets easier and is so much better than paper



Ordering is so quick, I  
can now top up a  
patient's medication  
in less than 5 minutes

It took me a few months,  
but I have the hang of it,  
now I no longer want to  
throw my laptop out of  
the window

It makes everything so  
quick! I no longer have  
to work until late writing  
medication Charts



We can screen more TTO  
Prescriptions as they are  
accessible from where  
ever we are



# Patient Safety Benefits



Due Medications functionality



Placeholder functionality



Legibility



Ability to access remotely

Maintain

Embed

EPMA going  
forward

Evolve

Optimise





Finalising Benefits Realisation



We continue to make development request to improve patient safety and further improve the system for all users - SCFT and beyond



Continued dialogue with Matrons and Operational Leads to maintain safe effective use



Senior Clinical Pharmacist - Digital will lead on EPMA and supporting best practice



Creation of the Digital Medications Optimisation Group

Thank you

Any questions

